

Twickenham & Richmond TRIBUNE

Contents

- TickerTape
- TwickerSeal
- COVID-19
- Borough Views
- History Through Postcards
- Marble Hill Marvels
- Hammersmith Bridge
- Film Screenings
- River Crane Sanctuary
- Twickers Foodie
- Traveller's Tales
- WIZ Tales - Luxembourg
- Football Focus

Contributors

- TwickerSeal
- Alan Winter
- Graeme Stoten
- Cllr Geoffrey Samuel
- Sian Berry AM
- Marble Hill House
- Richmond Film Society
- Sammi Macqueen
- Alison Jee
- Billur Owen
- Doug Goodman
- James Dowden
- Richmond upon Thames College
- LBRuT

Editors

- Berkley Driscoll
- Teresa Read



21st August 2020



River Crane
Photo by Berkley Driscoll

TickerTape - News in Brief

Old Town Hall loos now open!

The public toilets at the Old Town Hall in Richmond have reopened following their temporary closure due to COVID-19.

The toilets are open Monday to Friday from 10am to 4pm and will be shortly open on Saturdays when the Reference Library opening hours are extended.

Orleans House Gallery announces Art Unlocked exhibition

Art Unlocked will take place on 2 to 4 October at Orleans House Gallery. This unique exhibition will see artists display their own perspectives on the lockdown period and will provide local artists with an opportunity to showcase their work following the cancellation of this year's Open Studios event due to COVID-19.

Boa constrictor found at Barnes riverside

A 5 foot boa constrictor was found beside the Thames near Barnes Bridge on Sunday 16th August. The snake, said to be in good condition, was caught by the RSPCA.

Planning hearing for Old Station Forecourt, Twickenham development

A planning meeting on Wednesday 26th August will be held regarding the proposed 6-storey, 46 residential unit development proposed for the Old Station Forecourt, Twickenham (opposite The Albany pub).

Details of the planning application can be found [HERE](#)


Details of the planning committee meeting can be found [HERE](#)

Installation of bike hangars underway in 11 streets

The locations were chosen following requests and consultation with residents. A consultation on a further 20 will be held later this year.

More information can be found [HERE](#)

[Visit the News page for more stories](#)




Replacing your halogen recessed lights with LEDs will:

- ✓ SAVE ENERGY
- ✓ SAVE YOU MONEY
- ✓ PROVIDE BETTER LIGHTING

So...

- ✓ CALL US TODAY FOR A FREE HOME ASSESSMENT AND QUOTE

For a timed appointment please call Sky Electrical on 020 8894 1799
22 Fifth Cross Road, Twickenham, Middlesex, TW2 5LF
www.skyelectrical.co.uk



020 8894 1799
info@skyelectrical.co.uk



TwickerSeal and TwickerMole decided to help out and offer their services as private security on Twickenham

Green; apparently it's all the rage and Richmond Green residents are looking to do the same, fed up with the council's lack of action on the provision of adequate public toilet facilities.

TwickerMole had said the job would be a doddle; it seems you just have to walk around in pairs picking up the odd bit of litter, preferably on a quiet evening when there is no one around. And on those busy, rowdy nights? Well, you just keep together at the far edges of the green and make certain you don't interfere with all those chaps relieving themselves in residents' properties. That's a job for the police who, er, aren't here.



Borough View

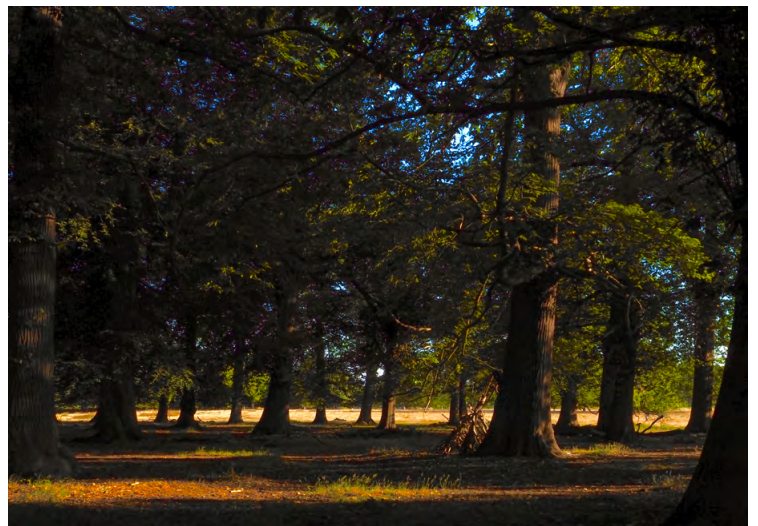
By Graeme Stoten

'Bog gate to Bishop's Pond'

Entering Richmond Park from Bog gate and joining the Tamsin trail heading east, you quickly descend towards a bridge where crack willow have taken root.

Heading onwards passing gnarled wild black poplar, a long stretch of lime trees, mature pin oaks with twiggy skirts and tough hornbeams, you eventually reach Bishops pond. Often dried out in summer and home to dragonflies and damselflies, several water loving Alder and Horse chestnut reside.

This early morning stroll ended for me in the foreboding deep shadow of the dark wood opposite.



COWARDLY LIBDEMS REFUSE CALL FOR IMMEDIATE EMERGENCY

COUNCIL MEETING TO DEMAND TOILETS ON OUR GREENS

The Conservative Group on Richmond Council's demand for an Emergency meeting of the Council to deal with the growing problem of a lack of public toilets in two key parts of the borough has been refused until late September meaning residents face to prospect of weeks more public health problems around both Greens.

Councillor Geoffrey Samuel says: "Today the LibDems have refused to even discuss our demand for toilet facilities for Richmond and Twickenham Greens in a timely fashion and tried to push the subject into the long grass. By resorting to a procedural device they have postponed any consideration of our demand until after the summer has passed. What cowards! "

As long ago as the end of June the Council Leader himself was complaining of urination and defecation in the open air whilst his Environment Boss refused to put up toilets because he said they were costly and had to be cleaned!

Adds Councillor Samuel: "And that takes no account of what local residents have had to put up with. Since then it has just got worse. Private gardens and even garages have been used as toilets – and decent citizens who remonstrated have been threatened and intimidated. The Conservative Group on the council says enough is enough! Bring in the portaloos NOW.

"It seems we are seeing the real colours of these LibDems. Public health counts for nothing – and they want to prevent any meaningful debate until the hour has passed".

Twickenham Police Station's front counter will re-open to the public in mid-September

The 24-hour front counter, which has been closed while refurbishment work was taking place, will re-open at 07:00hrs on **Tuesday, 15 September**.

The temporary front counter, based at Teddington Police Station, will close at the same time.

The refurbishment work was carried out to create a more modern facility which will meet the demands of 21st century policing. It will also reduce the running costs of the estate.

There are a range of ways for the public to contact the police, including online via our website www.met.police.uk.

In an emergency, people should continue to call 101 or 999 if it is urgent.

You can also contact Crimestoppers anonymously on 0800 555 111.

Green AM calls for more community police in Richmond

Green Party Assembly Member, Sian Berry has written to Sophie Linden, Deputy Mayor for Policing, asking for more community police work in Richmond Borough, including bringing back a police station to Richmond town centre, amid reports of rising crime and worry from the community around Richmond Green, Teddington Lock and Old Deer Park. [1]

In the letter, Sian raises concerns by residents about increasing disorder and says:

“More focus on community policing would help to reduce these crime rates, with particular impact on lower level problems, such as graffiti and vandalism, while also acting as deterrent for more serious criminal behaviour on Richmond’s streets. People who are sleeping rough on the high street could also receive more advice and care, with police officers directing them to suitable local services and protecting them from physical harm.”

July saw 11 crimes per 1,000 residents in South Richmond Ward, which covers Richmond Town, Green and the Riverside. This is almost twice the borough average and nearly a third higher than the rest of London.[2]

Local residents have written to Sian Berry about these increased crime rates and have also reported witnessing drug dealing and drug taking, assaults and fights, as well as seeing increased reports from police of weapon finds, particularly knives, in the area around Richmond Green, the riverside and town centre.

Between 2016 and 2019 there was a 53 per cent reduction in police numbers across the South West Basic Command Unit. In 2018, the police station in Richmond Town Centre was closed as part of cost-cutting measures meaning the nearest staffed police station is across the Thames in Twickenham. Currently, this station is closed for refurbishment.

[1] Sian Berry’s letter to Sophie Linden can be viewed [HERE](#)

TfL fare rise makes it clear that Londoners continue to pay the price for the political games being played by the Mayor and the Government - Caroline Pidgeon

Caroline Pidgeon, Liberal Democrat London Assembly Member, commenting on today’s news that most train fares will rise by 1.6% from 2 January 2021, but TfL fares will rise by 2.6% due to Government set conditions on TfL said:

“This exceptionally high fare rise for TfL passengers makes it clear that Londoners continue to pay the price for the political games being played by the Mayor and the Government.

“Nobody could have predicted the shock of COVID-19 to TfL’s finances. But instead of getting around the table and putting Londoners best interests first, we’ve seen punitive measures imposed from above. From stripping school children of free bus travel to punishing cash-strapped commuters on the tube, it’s time for the blame game to come to an end and a new fairer deal for Londoners is struck.”

Diamond Jubilee Gardens to close while site investigations take place

As part of Council's preparation for the redevelopment of Twickenham Riverside, vital exploratory works need to be carried out on the former pool site. To enable this to take place – Diamond Jubilee Gardens will be closed from Monday 24 to Wednesday 26 August 2020.

As the Council continues with its work to develop the proposals for the Riverside site and submit a Planning Application early next year, a number of surveys and site investigations need to take place. This includes an investigation into the underground conditions.

The exploratory work will not damage the site, however works will be noisy and there will be a risk of airborne debris.

Therefore, to ensure the safety of those in the area, the Twickenham Riverside Trust have agreed that the gardens be closed during the works.

In addition, a small number of parking bays will also be suspended during this time to provide storage for the equipment. These bays could be suspended for up to one week.



Residents in the nearby area will be notified directly of the works and risk of noise.

Cllr Julia Neden-Watts, Chair of the Environment and Sustainability Committee, said:

“Whilst the weather has been good, and we were in lockdown, we delayed these works as we were aware that many people were using our parks for their regular exercise. However, we can't put them off any longer – otherwise we risk delaying the whole regeneration project.

“I am sorry to anyone who will be unable to use the park and playground during this period, but we will be as swift as possible and as soon as it is safe to do so, the area will be reopened to the public.”

For more information, email ProgrammeTeam@richmond.gov.uk.

COVID-19

By Teresa Read

Prolonged COVID-19

The Director General of the World Health Organization met a group of Covid sufferers at the end of the week - Long COVID SOS - which represents patients with long-term effects from COVID-19 infection.

These patients want recognition of their disease, appropriate rehabilitation services, and more research to be done into the long-term effects of this new illness.

“Although we have learned so much about this disease, we only have less than 8 months of experience to draw on. We still know relatively little about the long-term effects”. (D-G World Health Organization).

Local Statistics: total cases of COVID-19

610 in Richmond upon Thames, 800 in Kingston-upon-Thames and 1,233 in Hounslow.

Countries with High Numbers of Deaths Recorded by the World Health Organization

USA: 172,033 Brazil: 111,100 Mexico: 58,481

South Africa (African continent) 12,618

Iran (Eastern Mediterranean) 20,264

The United Kingdom (Europe) 41,403

Note: This is a reduced number of deaths for the UK since last week as recorded deaths from COVID-19 are now calculated within 28 days of a positive test.

India (South-East Asia) 54,849

The total number of deaths worldwide, available from the World Health Organization is 789,197.



The Tree Agency

darryl parkin

The Treehouse
25 King Edwards Grove
Teddington, Middlesex TW11 9LY
Telephone 020 8274 0107
Mobile 07960 123580
Fax 020 8274 0119
info@thetreeagency.co.uk
www.thetreeagency.co.uk

The Tree Agency

A Listening Council?

Teresa Read

This week residents in and around Twickenham Green attended yet another zoom meeting with the Leader of the Council.

Yes, councillors do “listen” but one wonders whether anything is achieved as a result of these “Conversations”; it sometimes seems that local government, at least in the London Borough of Richmond upon Thames (LBRUT), is run by the Public Relations Department.

Anti-social behaviour, with its root in Twickenham Green, was mentioned at the zoom meeting. The chronic need for public toilets on the Green has been reported to the Council for well over a year but still we have yet to see what the Council is going to do about the toilet needs of the large numbers of people who use the open space run by LBRUT Parks Department. Funnily enough a Green Party councillor raised the issue of toilets at the beginning of the Zoom meeting, but the Council aren't listening to him either.

And it is not only in Twickenham where residents are dissatisfied.

People in nearby Teddington have complained that concern has been triggered by the closure of the last bank in Teddington. Could this be the result of not listening to residents about changes in parking which is threatening the High Street?

“the irritation is with councillors who don't listen – much like the issue of toilets on Twickenham Green.”

And so back to Twickenham where residents are concerned about a proposed change in the flow of traffic to create safer school streets which may make other roads, where other children walk to school and nursery, more dangerous.

“the irritation is with councillors who don't listen – much like the issue of toilets on Twickenham Green.” (Heard that before!)

And so finally back to Twickenham Green. At the zoom meeting last week one mother was concerned about her children being offered drugs on Twickenham Green. Another resident told of witnessing a drug courier exchanging a small packet for money in a quiet road off Twickenham Green.

What did the administration say? Well they listen.

One hundred and eleven years ago the Surrey Comet local paper printed an advert for the opening of a Roller Skating



Rink at St Margarets Hall, East Twickenham on the second of October 1909. Our first image shows the actual advert. It was a fairly short lived enterprise as four years later, on the same site on the junction of the Barons and the Broadway a new type of industry opened for business for the first time.

Twickenham Film Studios opened its doors and immediately became the largest film studio in the United Kingdom! Established in 1913 by Dr Ralph Jupp on the site of the former rink, the studios were constructed by the newly-formed London Film Company which at that time was the largest in Britain. London Film was a leading producer during the First World War, but the company struggled and went out of business in 1920. Twickenham Film Studios were sold off, and were used for various independent productions. About this time the studios dropped the word "film" from its title.

During the 1930s, the studio was run by Julius Hagen. Hagen built up his business making Quota quickies for major American studios who were required by law to produce a certain number of British films each year to be allowed to release their pictures into the lucrative British market. Hagen became very efficient at producing large numbers of these quickies of varying quality. He often filmed all day, and then brought in different crews and actors to work through the night.



Our postcard image shows the studios on the corner of the Barons and the Broadway in St Margarets during the 1930s. How times change! There is also a rare example of a studio advertising card.



Following the success of Alexander Korda's *The Private Life of Henry VIII* (1933), Hagen became interested in producing films which could be released in America. Twickenham took on more quality work such as the Gracie Fields vehicle *This Week of Grace*. This ultimately led Hagen to stop making quickies entirely and focus entirely on quality productions. He began to make more expensive films such as Seymour Hicks's *Scrooge* (1935) and *Spy of Napoleon* for which he hoped to gain an international market. Hagen spent £100,000 rebuilding

Twickenham Studios and acquired studios in other parts of London. He also broke with his established distributors and attempted to distribute his own films. This proved a mistake, the major American studios blocked his entry into their market, while his films failed to gain access in the British market. In 1937 Hagen's company went bankrupt as part of a wider slump in British filmmaking that year bringing an end to his reign at Twickenham.

Numerous films were made at Twickenham since the end of Hagen's tenure including Carol Reed's *The Stars Look Down* (1939).

In 1946 Alfred Shipman formed Alliance Film Studios Limited, controlling Riverside, Southall and Twickenham Film Studios. After his death in 1956 his two sons: Gerald and Kenneth Shipman took control of the studios with Kenneth later going on to form Alliance Film Distributors.

In the 1960s classic films such as *Alfie* (1966) starring Michael Caine, *The Italian Job* (1969), featuring Caine and Noël Coward, and Roman Polanski's first English language film *Repulsion* (1965) were made at Twickenham. *Be My Guest* (also 1965), features Jerry Lee Lewis and an early appearance by the young actor Steve Marriott and The Nashville Teens. Many of these 60s films used the local area to film in. York House was briefly turned into a sanatorium to shoot the hospital scenes in *Alfie* and *The Wild Geese* starring Richard Burton had several scenes shot in Marble Hill Park.



The first two Beatles feature films were made at Twickenham. *A Hard Day's Night* (1964) and *Help!* (1965), and also their promotional film for *Hey Jude* (1968). The Beatles also used the studios while rehearsing music for their album *Let It Be*. A film was made of some of the sessions and both the film and the album were released in 1970.

Our Beatles postcard was produced as a promotional give-away. The photo was taken in Ailsa Avenue on 15th April 1965 while the Beatles were filming *Help!* It shows Ringo Starr and John Lennon relaxing on their doorsteps.

There were times in the 60's when it was hard to avoid famous actors if you frequented The Crown, The Turks Head or the St Margarets Hotel.

A true story from about 1970. – Honest! At that time I played in the St. Margarets Hotel darts team. A few of us were practicing with a couple of other locals one night when into the public bar where we were playing walked Richard Harris, David Hemmings and Ringo Starr. “Ok for a game lads” said Harris and for an hour or so that night my pals and I played darts with the man who at the time was married to the gorgeous American actress Gayle Hunnicutt, the Irishman who famously “left his cake out in the rain” and ended up with a global hit record and one quarter of the Beatles! It's quite possible that our story wasn't believed when we went to work in the morning, but dear readers – You believe me don't you.....

Twickenham Studios as it is today appears on our final image. It is now a success story but had a close escape a few years ago. In February 2012, it was announced that due to the studio going into administration, it would close before June, just a year before its centenary. The studio was subsequently saved from closure, with a new owner acquiring it in August 2012.



Today, the studios' post production facilities include a state-of-the-art sound centre, at the heart of which is the refurbished The Richard Attenborough Theatre, named after Richard Attenborough who used to have his production offices at the studios.

It is one of the studios in the UK which has been Dolby Premier certified. Other facilities include a second dubbing theatre, *ADR / Foley Theatre*, numerous cutting rooms, office facilities and sound transfer facilities.

And so Twickenham Studios continues with its creative output which has added so much to the history of our Borough.

All previous articles in this weekly local postcard column are accessible by visiting www.twickenhamtribune.com Just go the archive editions which start in 2016.

With many of us spending more time at home at present it may be that you are using the time to tidy a few drawers or have a bit of a clear-out. If you trip over any old postcards, old envelopes with stamps on, or photograph albums that you would consider parting with, I'd be very interested in arranging to see them. Please contact me on 07875 578398 or by email at: alanwinter192@hotmail.com I am happy to pay cash for anything like that which I find of interest. So don't throw old postcards etc. in the skip or recycling bins. Show them to me first! Thanks, stay safe and well.

Your local handyman service



Visit our high street office or contact us to discuss your requirements

Mullen Property Services, Terminal House, Station Approach,
Shepperton, TW17 8AS
T: 01932 216 500 E: info@mullenpropertyservices.co.uk

We provide a professional and affordable service for your home projects

- Plastering
- Decorating
- Loft conversions
- Kitchen installs
- Bathroom installs
- Extensions
- Driveways
- Tiling



REMEMBER! THE BATTLE OF BRITAIN

Doug Goodman writes on events 80 years ago

On June 18th 1940 during a speech in The House of Commons Winston Churchill said, "what General Wegand called the Battle of France is over. I expect that The Battle of Britain is about to begin". It did indeed begin as the Luftwaffe set out to destroy the RAF before Hitler could attempt to invade England. Churchill continued, "Hitler knows he will have to break us in this island or lose the war". Eighty years ago this week the air battles were at their height with hundreds of aircraft engaged in combat in the sky above Southern England.



Wartime Posters



RAF Memorabilia



Wartime Publications

On August 16th 1940 The Daily Telegraph reported 'The RAF, aided by Britain's ground defences, yesterday achieved the greatest air victory of any single day in the war, when out of 1000 of Goering's raiders 144 were shot down for the loss of only 27 British fighters, The Battle of Britain began on July 10th with small bombing raids on shipping and military targets. The raids increased in intensity from mid- August until October after the attacks had switched to towns and cities during what became known as 'The Blitz'. Germany completely underestimated the strength and resolve of the RAF and never realised how rapidly the RAF could replace its losses of Hurricanes and Spitfires. The performance of British and German fighter planes and the skills of their pilots were fairly evenly matched but Luftwaffe pilots shot down over the UK were captured if they managed to parachute to safety while British pilots could be rescued and often returned to flying immediately.



Spitfire Cockpit



The Author in a Spitfire



RAF Hendon. Hurricane



RAF Museum Hendon

AIR BATTLES

For four months the battles to destroy the RAF's aircraft and airfields raged over Southern England before the Luftwaffe changed tactics and started to bomb London and other cities. While the sleek and fast Spitfire gained most of the glory during WW2 it was the sturdy Hurricane that destroyed the largest number of enemy machines. Between 8th and 31st August it was claimed that the RAF shot down 900 enemy aircraft for the loss of 444 of their planes.

Enemy losses were frequently exaggerated by both sides: at the end of the air battles the RAF claimed 2600 German planes shot down but the total was nearer 2300. The UK could repair and replace its aircraft with a speed that Germany found hard to match. For example the RAF had 672 operational aircraft on August 23rd but despite losses it had available on September 6th a total of 738 aircraft. This surprised the German pilots and caused a significant drop in morale despite Goering's promises of victory. On 15th September 1940 London was attacked by 200 bombers and fighters which were engaged by 300 Spitfires and Hurricanes: sixty enemy planes were shot down. September 15th is now the official Battle of Britain Day. When Goering, in a benevolent mood, asked his pilots what he could do to help them the answer was 'give us Spitfires'.



RAF Centenary Fly Past



Commemorative Stamps

THE FEW

On August 20th, in one of the Prime Minister's most memorable speeches, Churchill said, "never in the field of human conflict was so much owed by so many to so few". These airmen, supported by ground crews and many other specialists, were the magnificent men in their flying machines who

won the Battle of Britain and prevented the invasion of our country. A memorial in London remembers The Few . The names of the 1,497 pilots and aircrew killed can be found on the roll of honour in The Battle of Britain Chapel Westminster Abbey. A few weeks ago The Times carried a report on the last survivor: Group Captain John Hemmingway DFC, age 101, was the final known member of The RAF who flew during The Battle of Britain.



Battle of Britain Memorial

in

Marble Hill Horticultural Marvels

Gardening for butterflies and moths

The UK has 59 species of butterflies and five species of butterfly have become extinct in the last 150 years. The State of the UK's Butterflies 2015 report found that 76% of the UK's resident and regular migrant butterflies declined in abundance, occurrence or both over the last four decades. This is mainly due to the destruction of habitat through intensification of farming and change in the way woodlands are managed. (The State of the UK's Butterflies 2015). However, over the last 10 years the long-term decline in some threatened species has managed to be slowed slightly yet there is still much more to be done to halt the decline of these beautiful insects that we value so highly.

Moths tend to be seen as the poor cousin of butterflies and are often overlooked however the UK has over 2,500 species of moths, with 56 species becoming extinct since 1914. The State of Britain's Larger Moths Report 2013 found that two-thirds of common and widespread larger species (macro-moths) declined in the last 40 years. The losses in abundance were much greater in the southern half of Britain than the north.(<https://butterfly-conservation.org/moths>)

At Marble Hill Park we have planted with Butterflies and Moths in mind and the avenues of tree running from the house to the river include 14 Black Poplars and 27 White Poplars. Both of these trees are important food sources for different species of moths, particularly the Poplar Hawk Moth and the Hornet moth which require Poplars as a food source.



Poplar Hawk Moth. (Butterfly conservation org)



Hornet Moth. (Butterfly conservation org)

In the woodland quarters around the house we are hugely increasing the number of plant species in these areas with both spring and summer flower shrubs and trees such as Hawthorn, Privet, Plums and Cherries. These will provide nectar for the butterflies and moths however it is also vital to plant for the caterpillar stage of both moths and butterflies. Many of the plants that we consider to be weeds are important food sources for caterpillars, such as nettles, docks, thistles, dandelions and plantain. We are increasing the long grass areas in the park and increasing the species of plants in these areas which will provide food for a range of insects.



Marbled White butterfly feeds on long grasses.

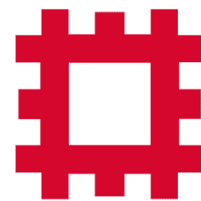


Ringlet butterfly feeds on brambles and wild privet.

If you would like to be part of the solution to help halt the decline of our native moths and butterflies there is so much you can do in your own garden, yard or windowsill.

- Grow as many nectar rich plants as possible between March and November and keep them flowering as long as possible by deadheading and watering.
- Try to grow a wide range of plants and plant them in groups rather than individually (this also looks more attractive as a planting design)
- Let areas of your lawn grow into long grass areas. (This can look very attractive especially with wildflowers growing amongst the grasses)
- Allow a patch of 'weeds', such as Dandelion, Nettles Docks and Bird's-foot-trefoil to grow.
- Leave bare patches of wall or fences, so butterflies can bask in the sunlight.
- Plants an area of mixed, native hedge (Hawthorn, Hazel, Privet and Dog rose) which will protect butterflies and moths from the wind.
- Make a log pile, where butterflies and moths can hibernate. Some moths breed in dead wood too.
- Try not to use chemicals in your garden if possible, pesticides can stay in the food chain for months.
- Try not to be too tidy in the garden! Leave some areas undisturbed, don't clear up the flower borders until spring and allow leaves and twig pile to stay undisturbed.
- If you would like more information the Butterfly Conservation Organisation has a fantastic website <https://butterfly-conservation.org/> on how to get involved.

At Marble Hill we are hosting a Zoom session with The Environment Trust on Butterflies on Monday 7th September 10am, to find out more about this email Rachel.Morrison@english-heritage.org.uk.



ENGLISH
HERITAGE





The Red Rose in full bloom and the Toadflax Plant with the same named Caterpillar in the morning dew. Both beautiful in their own way and to the 'Eye of the Beholder.' A recent photograph on Instagram of an Impala with an Oxpecker Bird on its forehead described the concept of "Mutualism". The bird rids the animal of harmful parasites and enjoys a meal for itself. Both benefit mutually from co-operating even if it is only for self-interest! We are being shown more ways to help nature with small changes in our own environment such as [companion planting](#) for pest control which avoids chemicals in our gardens and the hazardous drain off into the water table.



This is cheaper in the long run for us with the same if not better results and very beneficial for wildlife. How about considering a Bog or Rain Garden section to also aid with surface water dispersal after the downpours we are seeing with climate change and the introduction of so many hard surfaces in the urban landscape? The bog garden is more for retaining moisture to reduce watering needs whilst the rain garden is a temporary hold for excessive water to allow it to drain away or evaporate without causing flooding. Water can be diverted from downpipes into an area where it will be very wet in downpours but then can drain away to be a grassy area or flowerbed again.



[Bog Garden/Wildlife Garden Tips](#) and [5 Easy steps to a Rain Garden](#)

"Two roads diverged in a wood, and I – I took the one less travelled by, and that has made all the difference"

c. Robert Frost

River Crane Sanctuary [Website](#)

[Instagram](#)

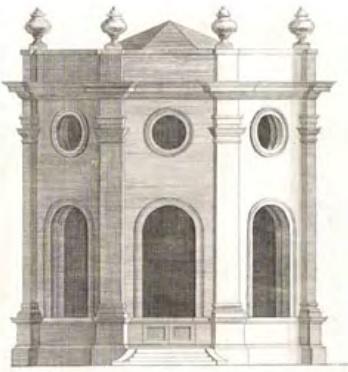
Twickenham Luminaries: Five free virtual lectures

Twickenham Luminaries is a series of five free virtual lectures on successive evenings starting on Monday 14th September. Each talk will shine a light on a particular individual associated with a historic building in Twickenham and will be given by an acknowledged expert.

Talks will start at 6 pm and last for approximately 20 minutes with time being allowed for questions and answers at the end. The event will end before 7 pm. They will be delivered using Zoom so you will need a computer or tablet with the Zoom program/app on it. We will send you a link by email approximately one hour before the talk begins and you should follow this link at the appropriate time to join the audience. If you haven't used Zoom before, you will be prompted to download the appropriate software as soon as you try to join.

You can book your places at [TicketSource](#). Tickets are free but you will be presented with an option to purchase a ticket for £5, the proceeds of which will be treated as a donation and will be used to support the five participating organisations.

Monday 14th September: Nellie Ionides and Orleans House, Minna Andersen



Orleans House was a home and meeting place for royalty, politicians and gentry in the two centuries it stood on the Twickenham riverside. It could be argued that the borough was deprived of one of its most historic buildings when it was demolished in 1926. Without the foresight of local resident, The Honourable Nellie Ionides, it is likely that the glorious Octagon Room would have suffered the same fate. Reputed to be the richest woman in England in the 1950s, join us in this talk to discover Nellie's life, love of art and dogs, and her legacy within the Twickenham community

Minna Andersen is a London Blue Badge Tourist Guide. Over the past 30 years, she has worked with embassies, government bodies, industry VIPs and heads of state, assisting their visits to London and offering them tailor made experiences.

They have ranged from art gallery tours and visits to famous London sights to specialist walking tours. She frequently appears in Finnish TV and news to promote all aspects of London. She is a volunteer with Orleans House Gallery and the Poppy Factory, using her skills as a speaker and as a guide to bring their history to life once more.

Tuesday 15th September: Henrietta Howard and Marble Hill House, Dr Megan Leyland



Henrietta Howard, Countess of Suffolk, (1689-1767) has perhaps been best known as mistress to the Prince of Wales, later George II. However, this talk will show that Howard was much more than a mistress. She overcame personal adversity to become an extraordinary figure in the Georgian court and a member of a dynamic circle of writers, poets and politicians. Arguably, one of her greatest achievements was the construction of her elegant Palladian villa, Marble Hill, and the gardens that surround it. This talk will explore how Marble Hill fits into Howard's fascinating life story, Howard's role in its creation, and her life at this most hard fought for retreat. Set within 66 acres of now public parkland, Marble Hill is the heart of our community but lives with the enormous legacy of a strong, talented

and resourceful woman at its helm.

Dr Megan Leyland is a Senior Properties Historian at English Heritage specialising in country houses and with a strong interest in gender history. She is responsible for undertaking research and producing content to support new interpretation and dissemination projects, and is currently working on a number of sites including Marble Hill, Kirby Hall and Bolsover Castle.

Wednesday 16th September: Horace Walpole and Strawberry Hill, Michael Snodin



Horace Walpole was the son of Britain's first Prime Minister, Sir Robert Walpole. He devoted his life to politics, the arts, antiquarianism, history, collecting and authorship and, from 1749, the creation of Strawberry Hill, his summer villa. The most significant building of the early Gothic revival, it was a place of the imagination, that inspired Walpole to write *The Castle of Otranto*, the first Gothic novel. Outside, it was designed to look like an ancient castle, the ancestral seat of the Walpoles. Its interiors formed a dramatic mood journey composed of changing colour harmonies and darkness and light, the rooms filled with a huge collection of art and antiquities. This talk will explore Walpole's greatest creative achievement, and how it was the clearest manifestation of his personality, interests and place in the world.

Michael Snodin is an architectural and design historian. He is chair of the Strawberry Hill Collection Trust and was previously chair of the Strawberry Hill Trust and Head of Designs and a Senior Research Fellow at the Victoria and Albert Museum. His publications include Design and the Decorative Arts: Britain 1500-1900 (V&A 2001) and Horace Walpole's Strawberry Hill (Yale 2009).

Thursday 17th September: Pope and His Villa, Professor Judith Hawley



More images were created of the exterior Alexander Pope's Thameside villa than of any other private residence in the eighteenth century. It was an icon of his work as a classicist, poet and satirist and a gathering place for those opposed to Robert Walpole's government. Jonathan Swift, John Gay, Lord Bolingbroke and Voltaire counted among his guests. After his death, his home and garden attracted so many visitors that a later owner razed the villa to the ground in order to preserve her privacy. This talk will consider what the villa meant to Pope himself and attempt

to recreate what it might have been like for him to live and work there, surrounded by reminders of his friendships and cultural influences.

Judith Hawley is Professor of Eighteenth-Century Literature at Royal Holloway, University of London. She has published on numerous eighteenth-century subjects and appears frequently on radio and TV sharing her interests in eighteenth-century culture with a wider audience. She is a Trustee of the Pope's Grotto Preservation Trust.

Friday 18th September: Sir John Soane and Turner's House, Ricky Craig Pound



This talk will explore the close relationship between Joseph Mallord William Turner (1775-1851) and his friend and fellow fisherman, the architect Sir John Soane (1753-1837). It will look specifically at Turner's design for his suburban retreat at Twickenham and illustrate how Soane's fascination for classical and Renaissance architecture helped Turner define its appearance and implied associations.

Ricky Pound is the current House Director and a Trustee of Turner's House. Previously he was the House Manager of Chiswick House and Marble Hill House and Gardens, both managed by English Heritage. In 2016 he curated a major exhibition on the Georgian landscape designer Lancelot 'Capability' Brown at Orleans House Gallery. He specialises in 17th and 18th century architectural history, symbolism and garden design.

SUP-YOGA & SUP-PILATES CLASSES IN TWICKENHAM

SUP-Yoga & SUP-Pilates classes offer a unique, dynamic and fun way to challenge your fitness on water! The sessions are taken on anchored paddleboards floating on water. The buoyancy of the water adds intensity to every movement and makes a refreshing change from usual mat classes. The classes suit all levels and abilities. EPIC SUP are running SUP-Yoga and SUP-Pilates classes from Twickenham Rowing Club, this summer.

To book or for enquiries contact: coach@epicsup.org



Mayor of London consults on Stag Brewery planning application

The Mayor of London is carrying out a public consultation on revised Planning Applications for the Stag Brewery site in Mortlake, following his 'Call In' of the local Planning Committee decision.

On 29 January, the Planning Committee resolved to approve Applications A and B for the redevelopment of the Stag Brewery and refuse Application C for the Chalker's Corner highway works, subject to no adverse direction or call in by the Mayor of London or the National Planning Casework Unit.

The applications were formally referred to the Mayor of London in April. On 4 May his Deputy Mayor, acting on his behalf, issued a public direction that, due to the nature of the development, the Mayor of London would "call in" and thereby act as the local planning authority for the purposes of determining **all three planning applications**.

Subsequent to the Deputy Mayor's Direction, the applicant has submitted amendments to the scheme to the Mayor. The GLA is now consulting on those amendments, with the deadline for feedback 27 September.

Cllr Martin Elengorn, Vice - Chair of the Environment and Sustainability Committee for Richmond Council, said: *"In broad terms the main change to the scheme is to provide more and a greater proportion of affordable housing by increasing the number of units and the height. We will be listening to the views of the public on this trade-off before finalising the Council's position."*

The first application (Application A) is the master plan for how the site would be developed. Changes to the application secured by the GLA include:

- Increase in residential unit provision from up to 813 units (including 150 flexible assisted living and/or residential units) to up to 1,250 units
- Increase in affordable housing provision from up to 17% to up to 30%
- Increase in height of some buildings, of up to three storeys.
- Changes to the layout of Buildings 18 and 19
- Conversion of Block 20 from a row of terrace housing to a pair of four storey buildings
- Reduction in the size of the western basement, resulting in an overall reduction in car parking spaces of 186 spaces, and introduction of an additional basement storey beneath Building 1 (the Cinema)
- Other amendments involving changes to internal layouts, relocation and change to the quantum and mix of land uses across the Site
- Removal of the nursing home and assisted living proposals from Development Area 2
- Landscaping amendments, including canopy removal of four trees on the north-west corner of the Site
- Updated supporting documents for all Applications



The second application (Application B) considered proposals for the erection of a three-storey building to provide a new secondary school with sixth form. The revised application includes minor amendments to the road and pedestrian layouts.

The third application (Application C) proposed the reconfiguration of Chalker's Corner traffic junction, to include existing public highway and existing landscaped and informal parking area associated with Chertsey Court. The revised application includes no changes to the physical works, however whilst this application remains 'live', it is understood that the GLA is considering alternative highway works to mitigate the highway impacts,

To see the revised applications, go to [London.gov.uk](https://www.london.gov.uk).

Anyone can make representations by emailing the GLA at theformerstagbrewery@london.gov.uk by 27 September 2020. Comments received after 27 September 2020, but before a decision is made, may still be taken into account but failure to meet this deadline could result in your comments not being considered

The Mayor has provisionally scheduled a [virtual representation hearing](#) for the 26 November at 13:30.

CrusaderTravel



020 8744 0474

crusadertravel.com

Escapology Experts

info@crusadertravel.com

Book with **Confidence**
@ Crusader Travel

Call for *Advice*

*Protocols and Travel
Disciplines are Less
Complicated than you*

THINK

Owner of two pubs in South-West London recognised by prestigious Princess Royal Training Award

(Beech House, Hampton Hill and The White Swan in Twickenham)

On 14th August, The City and Guilds Group announced that pub group, Oakman Inns - owner of the Beech House, Hampton Hill and The White Swan in Twickenham - will be one of just 43 recipients from [39 organisations](#) who will be presented with the annual Princess Royal Training Award in November.

This is the second time that the independent pub group, which employs over 1,000 people to run its 28 pubs across Southern England and the West Midlands, has been recognised for their training programme in the Award's five-year history.

The Princess Royal Training Awards recognise those UK companies that have created outstanding training and development programmes which have made a direct and provable impact on their employer's business performance. The 2020 winners demonstrated exceptional commitment to training, despite facing unprecedented challenges of Covid-19.

Oakman's CEO, Dermot King said: "We have always had a straightforward philosophy. We are in the hospitality business, and our 28 town centre and country pubs rely on our teams to be enthusiastic in their work and enthused by the standards of service we are consistently striving to achieve for our guests. Since receiving the Award in 2017 for our pioneering online learning and career development platform, the growth of our business has resulted in our employee numbers doubling. This required us to scale up our programme to meet the changing needs of both our business objectives and those of our team members. As a result, employee turnover has fallen by 16% while internally promoted chef numbers have increased by 34%."

Oakman Inns' HR Director, Jill Scatchard, said: "Oakmanology 2020 provides the framework and tools to consistently deliver and measure the success of a wide variety of interactive learning courses in a safe and personalised environment. We have introduced mini modules such as the Pizzaiolo Mini Module to support our pizza offer and together with the choice of multiple languages and help for Dyslexic users, our increasingly diverse workforce can shape their careers at their own pace. In the workplace, their online training is reinforced with 'on tap' practical guidance by our team of 'Training Ninjas' who are graduates of our unique 'Train the Trainer' programme, delivering exceptional skills at site level."

King added: "In the current pandemic crisis, our online programme has been critical to supporting our team members who have demonstrated an exceptional commitment to the additional challenges of Covid-19 training."

The other recipients come from a wide variety of other public and private sector organisations such as healthcare, finance and manufacturing including HMRC, The Co-Op and Royal Mail Group.

Commenting on this year's recipients Kirstie Donnelly MBE, Chief Executive of the City & Guilds Group, said: "Congratulations to all of the organisations who have achieved the Princess Royal Training Awards standard of excellence this year. We know that having a highly skilled workforce will be essential as we start to rebuild our economy post Covid-19, and, in increasingly uncertain times, making sure we invest in people has never been more important, nor has continuing to showcase the impact it has on organisational success."

Epic SUP

Eel Pie Island Club SUP



Stand Up Paddleboarding
The club is open again for membership,
taster sessions, SUP-Yoga, SUP-Pilates
and coaching

Based on Eel Pie Island
At Twickenham Rowing Club
info@EpicSUP.org

www.EpicSUP.org

ROSE-TINTED GLASSES

There's something rather special about rosé wine. I recall that old Vinho Verde advert years ago that said 'One swallow makes a summer'. Well, the same goes for rosé as far as I'm concerned. Just add a glass to your Friday lunch and, hey presto, it's a summer weekend! Well, you'll be pleased to hear, that in the interests of research for this column you understand, I've been checking out some rosés for you.

Let's kick off with **Aldi's** range. Even if there isn't a branch near to you, it's worth remembering that luckily (unlike Lidl) Aldi offers home delivery for many products including wines. Aldi has an excellent range – 13 varieties no less and starting at under a fiver – of rosé wines on its website at the moment. We tried an **Argentinian Malbec Rosé** (£6.49), a **South African** (£6.99) and a **Greek** (£6.99).

The **Malbec** was fabulous: packed with flavours of strawberries, cherry and white fruits. It was well rounded and was great on its own, but equally good with food. The **Roodeberg** was fresh and crisp with good colour. Again bursts of fruit but with a hint of spice too. It had a good finish and again, superb value for money. I think our favourite, though, of the Aldi ones was the **Greek Nautilus** rosé. One doesn't generally associate Greece with rosés but this was a fine example. Made from Grenache, Syrah and Agiorgitiko grapes, it was delicately pale and beautifully balanced, with hints of flowers, peach and citrus. We loved the minerality and its elegant finish – it took us straight back to our many holidays to Greece in our imagination. (Which reminds me, I must order some more online before it sells out!)



And, of course, everyone associates rosé wines with **Provence** – which isn't surprising as the wines are fabulous and the marketing has always been very slick. We decided to try the **Réserve des Templiers, Commanderie de Peyrassol** from Majestic, which at £13.99 was more expensive, but a refreshing, fruity, citrus and wine with mineral notes. It was extremely well balanced and light, one could happily quaff a great deal on a nice summer day!

Last, but by no means least, was the **Rosie D from Doran Vineyards**. This South African Grenache Noir captures the spirit of summer perfectly, with a splash of soft fruits – strawberries and raspberries – and a background note of delicate candyfloss. Around £11 a bottle, it's available from Ricardo's Cellar, Premier Wines, online and other good independents.

And still looking at rose-tinted glasses, I've discovered a stonkingly good alternative to Aperol. While I quite enjoy an Aperol spritz, I tend to prefer Campari, as it's less sweet. Now there's a new one to consider: **Pampelle**. Available in Waitrose at £20 a bottle (70cl) this is an artisanal, versatile liqueur that perfectly captures the bitter-sweetness of ruby red grapefruit from Corsica. It is 30 per cent lower in sugar than other leading aperitifs – which is probably why I like it so much. It's very much my 'go-to' choice at the moment when I fancy a pink spritz... before embarking on the rosé!



Cheers! Let's hope for a long, Indian summer.



A NOTE FOR YOUR BANK HOLIDAY DIARY

Good news! The **Mitre at Hampton Court** has been given a much-needed overhaul. It is the first hotel from The Signet Collection and it's reopening from September. However, I've just found out that on **Monday 31 August** (Bank Holiday Monday) it will be offering a two-course menu for £20 in both of its riverfront restaurants 1665 and Coppernose. But in fact it will only cost £10, as a result of it being

part of the 'Rishi Dishy' initiative.

Booking is essential, and do please bear in mind that this is what's known as a 'soft opening' so the staff are likely to be new and you should be kind to them.

I might see you there!



Caliban's Lament

by Anne Warrington

Critique by Quentin Weiver

The whole is more than the sum of its parts. Now here is an adage worth hanging on to when considering Shakespeare's *The Tempest*. Dig deeper and a corollary emerges when examining the play's two most enigmatic protagonists, Prospero and Caliban, that intellect is more than a sum of knowledge. Anne Warrington has done just that in her poem, [Caliban's Lament](#).

Postcolonial polemicists have appropriated *The Tempest* in a way that Shakespeare could not have imagined, with Caliban being reinterpreted as an African slave in the Caribbean or a Native American. Late Elizabethan travellers were full of admiration for the civilisations of the Americas. Bear witness a 1590 *Report of the New Found Land of Virginia*, beautifully illustrated by Theodore de Bray, full of wonder and respect.



In *Caliban's Lament* Anne Warrington imagines Caliban post the events of *The Tempest*, on his island, free of Ariel, free of Miranda and free of Prospero. But Caliban questions why he is not happy. There is everything there, but he cannot put it together. The poem is written as a series of lists. There are his blessings, bird song, crickets chirruping, crystal clear rivulets, calm seas. Nevertheless, Caliban is unhappy. He wants to re-create the ambience that surrounded Prospero, "the festivals ... sumptuous feasts, carnival, celestial music".

So Caliban puts together his shopping list "... broken staff... the library of books ... the cloak... symbols and signs ... strings of numbers". It's all there, but like a vocabulary without a grammar, a body without a soul, a computer without a programme, he cannot "change the weather, control the seas, cause tempests, command spirits" as he would wish.

Such it is with cultures. No more than Prospero could absorb Caliban's culture, Caliban cannot usurp Prospero's culture. It is more than just knowing how to use a toolkit, there are innate congenital skills that cannot be recreated. Caliban though is embittered. Prospero freed Ariel but indentured Caliban; Caliban could not win Miranda and Prospero has "left him behind, without a backward glance, to work out his own destiny".

Here's the rub, as Shakespeare would say

Read Quentin Weiver's review at www.markaspen.com/2020/08/21/calibans-lament-a-critique. *Caliban's Lament* was published in [Edition 189 of The Tribune](#)

Photography after Theodore de Bray

Summer travels to Turkey in the Time of Covid. Turkey Beckons, my annual trek home!!!

By Billur Owen

With Covid-19 and being in the travel industry for the last 25 years, I didn't think this trip was going to happen, great to be proved wrong

Last Monday, I and family headed to Gatwick for our flight to İzmir. Firstly Gatwick airport was all up and running as usual, we were flying with EasyJet on a 6am departure, so definitely an emergency Pret coffee stop before boarding, all the necessities facilities are open airside and the social distancing all in place.



Several reasons to travel to Turkey: to get a much-needed Mediterranean holiday, see my parents and my husband to get his dental implants, BTW if you are considering any dental work, Turkish standards are excellent both in hygiene and prices.

Part 1)

Right. onto the main priorities, holiday conditions etc. We were based in Izmir on the Aegean Coast for a week, nice modern city with a beautiful bay, easy travelling to Ephesus and Kuşadası. Again, Covid conditions covered well, hand gel dispensers at all shops and adherence to masks. Excellent choice of restaurants and only 3 hours 20 minutes flight.

Part 2)

Into the second week, we took a transfer across from Izmir to my beloved Kas, it really is an idyllic fishing town, cobbled streets, cracking cafes and restaurants and a really relaxed atmosphere.

Great for diving, paragliding, my two girls have done both. There's lot of adventure stuff, canyoning, mountain biking etc. The town is well situated as a base for travelling around, plenty of historical and areas of natural beauty to see. Apparently they serve a beer properly in a frozen glass. Also at time of writing, still an approved air bridge country



Hope this helps you make that decision to get that well-earned holiday.

www.crusadertravel.com

WIZ Tales - Luxembourg

The first photograph this week is one that I took in Echternach some years ago. The following photographs were from the Luxembourg tourist office in 2002.

I put together the initial pages on Luxembourg at the beginning of 1999 and received the following email from Lisa Oberg who was researching her family's roots in Luxembourg. Lisa wrote that she particularly liked the LuxFacts. She thought the pages *"developed a very well rounded and a user-friendly overview of Luxembourg."*



The capital city is well worth a visit but the countryside and small towns make a change from the hurly burly of city life.



More photographs of Luxembourg

<http://worldinfozone.com/gallery.php?country=Luxembourg>



Richmond upon Thames College partners with ECITB for Engineering Scholarship Programme

Richmond upon Thames College (RuTC) is pleased to announce that it has secured funding for 16 students to be paid while they learn the skills to progress onto an apprenticeship programme. The Engineering Construction Scholarship Programme will be delivered in collaboration and with funding from the Engineering Construction Industry Training Board (ECITB).

From September 2020, RuTC will offer 16 scholarships, eight in Engineering Design and Draughting as well eight scholarships for Project Control. The scholarship is a two year full time programme equipping learners with a Level 3 Extended Diploma in Engineering. Once the learners have completed the scholarship they will be supported to progress onto year 3 of an Engineering apprenticeship programme in their chosen discipline.

Students applying for the programme will be asked to complete a 350 words essay, outlining why they are aspiring to pursue a career in engineering. ECITB developed the programme as a direct response to the expected fall in apprenticeships this year, stating that it is a great opportunity for employers to recruit a young person who had the training to enter an advanced stage of an apprenticeship or be recruited directly on site. During term time, apprentices will also be supported by an allowance of £140 per week.

Sheila Fraser Whyte, Executive Director for Business Development and Innovation at RuTC, said, "Richmond upon Thames College has been working with ECITB for over 10 years successfully delivering engineering apprenticeships, with achievement rates 10% above the national average. Our college works with a number of engineering employers including KBR, Jacobs, Worley, Wood, Fluor and most recently Skanska. The partnerships ensure that all our apprentices have the skills, knowledge and behaviours to succeed in their chosen jobs. We are excited about the new scholarship and the great opportunity that prospective learners have to earn while they learn during this unprecedented time."



GCSE results are in!

High praise has been issued this week to pupils and school staff, as GCSE grades have now been published.

Due to the coronavirus pandemic, pupils were not able to sit their exams this year. Following last week's controversy around A level results, students have now received teacher assessed grades, rather than standardised grades originally proposed by the Government and the exams regulator, Ofqual.

Against the national picture of vastly improved outcomes, local GCSE results show a similar improvement in almost all measures in local schools. It should be noted, however, that the changes to grading this year make direct comparison with previous years difficult.

Provisional figures show that 84% of pupils achieved a grade four or above in English and maths, which is broadly equivalent to the old C grade or above. This is 7% points higher than was achieved by local pupils in the tests last year and almost 20% points higher than the 2019 national average. 65% of Richmond's students also secured a 'good' pass in both subjects, achieving a grade 5 or above.

The proportion of pupils who achieved the English Baccalaureate, which considers performance across a range of subjects including humanities, languages and science, is also considerably higher this year when compared to local and national results.

Council waives planning fee for Hammersmith temporary bridge

Richmond Council has reinforced support for the quick delivery of a temporary pedestrian and cycle bridge following the complete closure of Hammersmith Bridge last week.

Councillor Alexander Ehmann, Deputy Leader and Chair of the Transport and Air Quality Committee, has written to Heidi Alexander, Deputy Mayor of London for Transport, confirming Richmond Council's intention to work collaboratively with Transport for London to ensure construction of a temporary bridge goes as ahead quickly as possible.

Councillor Ehmann also confirmed that Richmond Council, as one of the planning authorities for the temporary bridge, will reimburse the fee payable for the planning application.

"The full closure of Hammersmith Bridge has further underlined the importance of secure funding for the repair of this iconic structure. The Government are the only agency with the financial heft to be able to provide those much needed funds. The continued silence over the provision of these monies is building real resentment amongst local people. They feel that the Government have simply forgotten them."



"In the meantime, we believe that rapid progress toward the construction of a temporary foot and cycle bridge is now even more crucial for our residents. That's why we've done what we can to re-energise TfL's planning application by offering to reimburse our planning fees. The truth is that more money will be required to support the temporary structure's construction, but Richmond Council believes that we must keep up the momentum regarding this important lifeline for residents."

Hammersmith Bridge is owned and maintained by Hammersmith & Fulham Council. Due to severe structural issues, the bridge was closed in April 2019. Following a detailed investigation by a team of world-leading specialist engineers, TfL and Hammersmith & Fulham Council agreed on the future requirement of the bridge. The first stage of the restoration programme began, and TfL provided £25 million to pay for it. Early estimates indicate the wider work could cost around £140 million.

View the full letter [HERE](#)



RFS The Best of our Recent Historic Screenings

Issue 22, 21st August 2020

DAYS OF GLORY

A new series for those of you who are missing Richmond Film Society's screenings or, indeed, trips to the cinema generally as a result of the COVID-19 crisis. Their committee is producing a number of weekly recommendations of films screened during the last 20 years that were extremely well received by their audiences. Should the notes reproduced below entice you to try and catch-up with this recommendation, then you should be able to do so, as it is available on streaming services and for purchase as DVD/Blu-Ray discs from the online retailers as indicated below.

RFS Context: **DAYS OF GLORY** was 682nd film screened by RFS on 1st November 2011. **Days of Glory** was the third to top ranked film of Season 49, it got an approval mark of 92% from those attending (The top and second ranked films **North Face** and **Broken Embraces**, have already featured in our Best of our Recent Historic Screenings as **Issues 2 & 15** respectively). Rachid Bouchareb's follow-up film **Outside the Law** has also been shown by RFS in 2018. **Days of Glory** can be streamed from Amazon Prime and the discs are available from Amazon and others.

DAYS OF GLORY (Indigènes)

Country: Algeria/France/Morocco/Belgium, 2006
Director: Rachid Bouchareb
Screenplay: Rachid Bouchareb & Olivier Lorelle
Language: French/Arabic
Music: Armand Amar & Cheb Khaled
Editor: Yannick Kergoat
Cinematography: Patrick Blossier
Running Time: 120 min., colour

Leading Players:

Jamel Debbouze	(Saïd Otmari)
Samy Naceri	(Yassir)
Roschdy Zem	(Messaoud Souni)
Sami Bouajila	(Abdelkader)
Bernard Blancan	(Sergent Roger Martinez)
Mathieu Simonet	(Caporal Leroux)
Assaad Bouab	(Larbi)
Benoît Giros	(Capitaine Durieux)



Days of Glory won the *Prix d'interprétation masculine* at the 2006 Cannes Film Festival. The film was nominated for the Academy Award for Best Foreign Language Film, but lost out to **The Lives of Others** (previously shown by RFS and featured in Issue 12 of our Best of our Recent Historic Screenings as our top film from season 45).

Days of Glory tells of a forgotten army. The North African soldiers from former French colonies who took up arms to defend a country that most had never seen. Their motives for doing so are varied but all are unified by a sense of duty and a pride in their part in freeing France from the Nazis. However, what really unites the men – and also begins to tear them apart – is the fact that despite the risk to each being equal on the battlefield, in the mess hall they are treated as second-class citizens.

It's a disparity that starts with a disagreement over the allocation of tomatoes and extends through to the present day when, until recently, pensions for France's colonial veterans had been frozen at 1959 levels.

The French title *Indigènes* (which translates as “natives”), with its slightly pejorative air of Gallic disdain, is more appropriate, hinting at the complex issues raised by this impassioned, intelligent film.

Bouchareb's film carries its message with dignity and a restraint that never dominates the storytelling. The result is the most powerful war film of the year.

Gabriele Cullen

Welcome back. We're opening our doors again on 27 August. Two million years of human history awaits!

We've made a few changes to ensure you can safely enjoy your visit:

- Entry to the Museum is now ticketed for the free, permanent collection (only selected Ground floor galleries will be open) as well as paid exhibitions, so all visitors, including Members and volunteers, need to [book a timed slot in advance](#).
- Face coverings are required for the protection of yourself and others, unless you are exempt.
- There is a [new one-way route](#) signposted through the Museum, which is easy to follow.
- We ask that you keep a safe distance apart during your visit. Staff are on-hand to advise and there are markers throughout the Museum to guide you. Please be considerate to other visitors and staff.
- Hand sanitiser stations can be found throughout the Museum. Please wash or sanitise your hands regularly.
- We have introduced extra cleaning measures for your protection.
- Some of our cafés and shops will be open – contactless payment is preferred.
- Please do not visit if you feel unwell or have COVID-19 symptoms.

www.britishmuseum.org

The British
Museum

FOOTBALL FOCUS

By James Dowden



BRENTFORD FC

Brentford to kick off season at home to Wycombe

Brentford will play their first competitive game of the 2020/21 at their new Brentford Community stadium against Wycombe Wanderers in the First Round of the Carabao Cup.

The TV cameras will be in town as the game will be shown live on Sky Sports with a kick-off time off 12:00pm on Sunday 6th September. The two sides last met competitively back in January 2012 where the Bees ran out 5-2 winners courtesy of a Gary Alexander hattrick.



Bees announce first summer signing

Charlie Goode has been announced as the Bees' first signing of the summer transfer window following the central defender's move from League Two play-off final winner's Northampton Town.

The 25 year old signs on a four year deal with an additional year as an option and for an undisclosed transfer fee.

Speaking to club media Head Coach, Thomas Frank said: "I'd like to welcome Charlie to the Club. Charlie is a player I really like; he is an aggressive defender and a big aerial threat in both boxes, which is a big thing for us. He has good quality on the ball which we feel we can develop further within our style of play. The pathway through the non-league and lower leagues develops you hugely as a person and builds your character in ways that I really like. I feel Charlie can add something to the team in that regard, especially given his leadership qualities. We are sure that he will grow and develop further with us over the coming years and that, in turn, he will help us go forward as a Club too."

Co-Director of Football, Phil Giles also said: "There was significant interest in Charlie from other Championship clubs, therefore I'm very pleased we were able to secure his signing. Our defence was already strong last year and we feel that Charlie can help us become even stronger, especially given the experience he brings having captained a successful Northampton Town team last season. We wish him well."

2020/21 Championship fixtures released

Brentford have found out who they will be facing on the opening day of the 2020/21 Championship season following the release of the fixtures. The Bees will away to St Andrews to play Birmingham City on the weekend of Saturday 12th September.

The first home league fixture at the new Brentford Community Stadium will take place the

following week on Saturday 19th September.

The Bees face a tough run in with games against Birmingham City, Millwall, Cardiff City, and Watford as well as a trip to AFC Bournemouth before our season finale away at Bristol City on Saturday 8 May.

Come on you Bees!

Hampton & Richmond Borough

Niko Muir resign for Beavers

Hampton & Richmond Borough have announced the resigning of striker Niko Muir on a permanent basis following his successful spell on loan from Hartlepool during the 2019/20 season.

Speaking to club media Muir said, "Of course I know Gary very well and it's unfinished business" explains Muir when asked why he signed for the Beavers. "I've come here to get the play-offs or even better win the league. We've got to aim high. I strongly believe only because of corona did we not make the play-offs (last season) and we've got the same bulk of players".

"I see him not just as a manager but a friend" he emphasises. "He helps me out massively with my personal life so I love repaying him by scoring goals on the pitch which makes him happy!"

Rene Steer signs to bolster Beavers squad

Experienced defender Rene Steer has completed a switch from National League side Maidenhead United to the Beavers. Steer started his career out at Arsenal before building up a reputation as a dependable non-league player. He most recently played for the Magpies where he made over 140 appearances during which time he won the 2016/17 National League season.

Speaking about after his move, "I spoke to some of the boys (Inman, Wassmer and Cox), and the project that's going on here I want to be a part of" explains Steer. "When I spoke to Gary, he explained his philosophy, what he's trying to do and I believe in it."

"Aggression, a balance of attack and defence, plenty of talking and a character that will try and lift the whole team" outlines Steer when quizzed on the attributes he will bring.

"My aim is to get this team up, be it by (automatic) promotion or play-offs, that's the goal."

Come on you Beavers!



HRBFC

Dumping goods outside charity shops could earn you a fine!

Richmond Council has warned people not to dump unwanted goods outside charity shops because they could be prosecuted for fly-tipping and fined.

It comes after people began leaving items outside shops which have had to close until further notice due to coronavirus.

By treating the dumping as fly tipping, it means people could face fines from the Council and if it were to progress to court, those fines could be as high as £2,500.

The Council is asking people to store the unwanted items in their home until shops are ready to re-open, use one of the on-street clothes recycling banks, apply for a TRAIID home collection or take the clothes to the Household Waste and Recycling Centre at Townmead Road to be passed on.

Residents who wish to report fly-tipping, can do it online.

CLlr Julia Neden-Watts, Chair of the Environment and Sustainability Committee, said:

“It is disappointing to see the rise in unwanted items being dumped outside closed charity shops.

“In normal circumstances these shops would welcome donations. But these are not normal circumstances.

“Many of our charity shops are shut. Anything that is left outside will be treated as fly-tipping and that leaves the person dumping the material open to a fine. There is no excuse.

“Our Council officers do remove the donations, which have often been damaged by the weather or vandals, and then they are no good to anyone.

“I appreciate many people are having a clear-out, but please do the right thing and look for an alternative.”



Townmead Road Household Waste and Recycling Centre in Kew has a number of textile recycling banks. We can accept pairs of shoes, clothes, hats, belts, towels, bed sheets and curtains that are clean and in good condition. These items are re-used in developing countries. Please place items in a plastic bag to help keep them clean.

[Book an appointment for Townmead](#)

[Book a TRAIID home collection](#)

Transport Secretary launches new Acceleration Unit to speed up transport infrastructure projects and build back better from Covid

- ‘Acceleration Unit’ launched to speed up delivery of transport projects as Government announces new wave of funding to level up parts of UK
- Campaign for Better Transport Chief Executive and consumer champion Darren Shirley to lead the new team of non-Government specialists to drive forward progress on key projects
- Launch coincides with around £360m of investment to build back better from Covid-19

Vital rail and road upgrades that will create jobs, increase connectivity, and boost the economy will be delivered more quickly, thanks to the launch of a new Acceleration Unit announced by the Transport Secretary Grant Shapps today (Friday, 21 August).

The new team of specialists will join the Department for Transport (DfT) in order to tackle delays to infrastructure projects and drive forward progress for passengers.

The unit is set to be in place next month and will be directly accountable to the Transport Secretary. It will be led by Darren Shirley, currently Chief Executive of the Campaign for Better Transport and formerly of Which? Magazine.

Alongside the Acceleration Unit, the Transport Secretary today announced a raft of ambitious upgrades to Wales’ railways, with £343m of investment to deliver better, faster, more reliable journeys for passengers.

This includes kickstarting design work on plans to upgrade Cardiff Central station, and funding to develop plans for upgraded cutting-edge digital signalling on the 241-kilometre Cambrian line from Shrewsbury Sutton Bridge Junction to Aberystwyth and Pwllheli, and proposals to speed up journeys between Cardiff and Swansea, Chester and Llandudno Junction, and the Severn Tunnel and Cardiff.

Transport Secretary Grant Shapps said:

“As Britain begins to get moving once again after four months of lockdown, no-one should underestimate the scale of the challenge ahead.

“We want to accelerate Britain’s recovery by investing in vital infrastructure that will help get businesses back on their feet, create jobs to replace those that have been lost and level up our country.

“The creation of our new Acceleration Unit and investment in our roads and railways will ensure we build back better, greener and faster in the future.”

Chancellor of the Exchequer, Rishi Sunak, said:

“This £360 million investment in our roads and railways will help drive our economic recovery from coronavirus – creating jobs and levelling-up by ensuring businesses across all corners of the UK have the opportunities they need to grow.”

Darren Shirley, Head of the Acceleration Unit, said:

“I am delighted to take on this important new role, bringing a fresh perspective and external advice

to accelerate the delivery of key infrastructure projects and programmes.

“The breadth and depth of expertise in my new team will stand us in a good stead as we look to deliver the schemes that will help the country to rebuild faster through decarbonising the transport system and levelling up Britain as we emerge from the Coronavirus crisis.”

The Acceleration Unit will also engage experts with significant experience in delivering infrastructure projects including Highways England’s Director of Complex Infrastructure projects, Chris Taylor, who oversaw the construction of the £1.5 billion A14 scheme which was not only delivered on budget but eight months ahead of schedule, and Mark Reynolds of MACE, who oversaw the construction of the Nightingale hospital in East London in nine days.

The creation of the team follows the establishment of a new Northern Transport Acceleration Council, dedicated to swiftly levelling up infrastructure across the north’s towns and cities, forming a direct link between Westminster and local leaders.

Today’s news comes after the Transport Secretary visited the A14 in Cambridgeshire yesterday (Wednesday, 19 August), a £1.5 billion upgrade between Cambridge and Huntingdon.

Completed on budget and opened eight months ahead of the project’s planned completion date, the last of the 24/7 roadworks were removed in May thanks to efficient and innovative construction techniques such as trialling autonomous dumper trucks, 3D modelling and using prefabrication yards to build structures off site and wheeling them into place when ready.

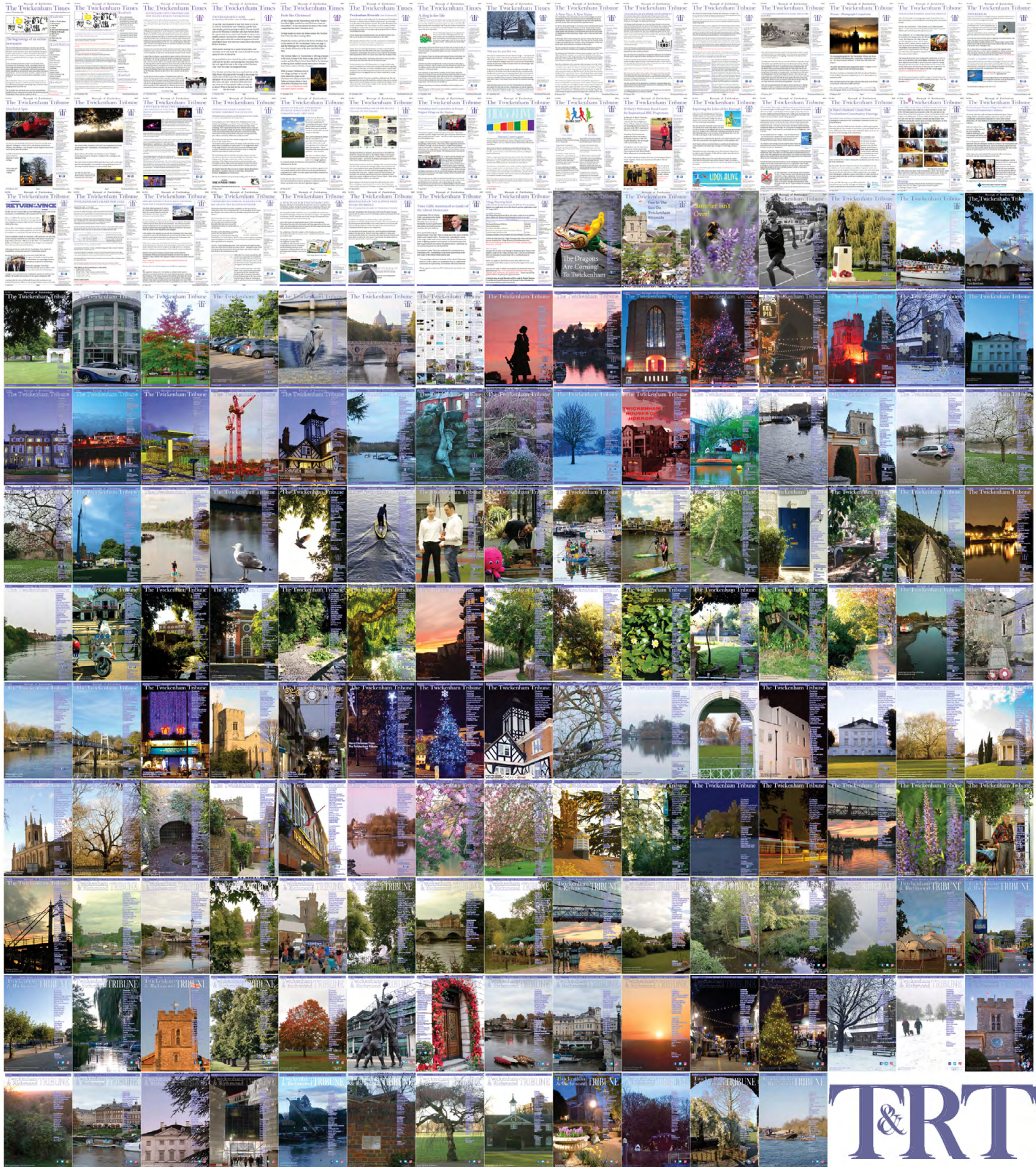
The Transport Secretary also unveiled a host of further road and rail investments today, including:

- £1.1 million investment for Network Rail to develop short-term plans to relieve overcrowding at **London Liverpool Street station**.
- Funding to complete the £6.4 million scheme to build a new second footbridge serving all four platforms at **St Albans City station**, easing congestion and addressing safety issues at an increasingly busy station. Work’s due to start early 2021 and be complete by January 2022.
- £4 million to develop the design phase for **gauge enhancement and track improvements for freight trains** on Great Western, Midland Main Lines and at Darlington to allow longer intermodal freight trains to operate from Teesport to Yorkshire. The Darlington scheme will be delivered by October 2020.
- £9.74 million for signalling and infrastructure enhancements delivered on the **Wessex route at Twickenham, Bracknell and Virginia Water** as part of the Feltham and Wokingham Signalling Renewal Programme. This will help improve the reliability and flexibility of services starting from Easter 2021.
- Highways England will also today launch their Strategic Business Plan and Delivery Plan, both for 2020-2025. The two documents will set out how the Company will take forward the ambitious plans set out in **the Government’s RIS2 strategy** to improve England’s road network. The Delivery Plan will confirm the delivery schedule for road upgrades and schemes the Government will be funding over the next five years.



Department
for Transport

198 editions of the **Twickenham & Richmond Tribune** online - Lots to read: News, Reviews, History and On-going Sagas in this Borough in South-West London.



Half Page

Quarter Page
Landscape

Quarter Page Portrait

Eighth Page

Eighth Page
Landscape

Example advert sizes shown above

Thousands read The Twickenham & Richmond Tribune

If you are reading this you could be advertising your business with
The Twickenham & Richmond Tribune. Community rates are
available

Contact: advertise@TwickenhamTribune.com

View ad details at www.TwickenhamTribune.com/advertise

Contact

contact@TwickenhamTribune.com
letters@TwickenhamTribune.com
advertise@TwickenhamTribune.com



Published by:

Twickenham Alive Limited (in association with World InfoZone Limited)
Registered in England & Wales
Reg No 10549345

The Twickenham Tribune is registered with the ICO under the Data
Protection Act, Reg No ZA224725

©Twickenham Alive Limited. All rights reserved. No part of this publication may be used or reproduced without the permission of Twickenham Alive Limited. While we take reasonable efforts, this online newspaper cannot be held responsible for the accuracy or reliability of information. The views and opinions in these pages do not necessarily represent those of Twickenham Alive Limited or The Twickenham & Richmond Tribune. [Terms & Conditions](#)